

Leicester
City Council

**WARDS AFFECTED
ALL WARDS (CORPORATE ISSUE)**

CABINET 16TH JULY 2001
SOCIAL SERVICES AND PERSONAL HEALTH SCRUTINY COMMITTEE 18TH JULY 2001

THE CHILDREN'S FUND

Report of the Director of Social Services

1 Purpose of Report

- 1.1 The purpose of this report is to provide an update on the development of Leicester's Children's Fund proposals.

2 Summary

- 2.1 A considerable amount of development work has been undertaken by the Social Services Department Children's Services Planning Unit on behalf of the Leicester Children's Planning Partnership. With the support of the Health Action Zone a seconded project manager has been in place since 26th March and the local proposals have been progressed through the auspices of a multi-agency working group, reporting to the Leicester Children's Planning Partnership.
- 2.2 There has been a broad range of consultations with local voluntary and statutory agencies and these are described in more detail in the supporting report.
- 2.3 The supporting report and accompanying papers cover the interim proposals submitted to the Children and Young People's Unit on the 10th of May 2001, the feedback received from the unit, and a description of the anticipated shape of the programme to be submitted by the 29th of June 2001.

3 Recommendations

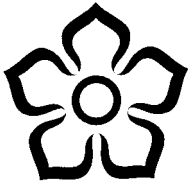
- 3.1 That Cabinet endorse the submission to the Children and Young People's Unit and the current developments, and commends the anticipated future direction of the Children's Fund proposals in Leicester.
- 3.2 That the Social Services and Personal Health Scrutiny Committee note the final submission and receive further progress reports on a regular basis.

4 Financial and Legal Implications

- 4.1 **Financial Implications:** There is potential for a small amount of inward investment related to Council infrastructure support for the Children's' Fund Programme, and there may be some preventive services which are best provided by the Council. Work is underway to finalise the detail about the services to be provided.
- 4.2 In keeping with the spirit of the guidance, a large proportion of the services will be provided by the voluntary sector, and a voluntary sector host agency is being sought for the programme. A recruitment process has recently taken place and if a decision is made in time it will be announced at Cabinet.
- 4.3 After the completion of the 3-year programme (from 2004/5 onwards), there will be a further three years of tapered funding (there will be 20%, 40%, and 60% reductions in years four, five and six). There is a clear expectation that mainstream services will 'bend' in a preventative direction, and that there will be a tapered pickup of the Children's Fund programme by the statutory agencies.
- 4.4 The supporting report examines the various ways in which the programme is being designed to ensure that the programme is as sustainable as possible beyond the initial three years of full funding, ensuring that the risk to the Council is manageable.
- 4.5 **Legal implications:** There are no specific legal considerations arising from this report (Guy Goodman, Assistant Head of Legal Services – ext 7054).

5 Report Author/Officer to contact:

- 5.1 Andrew Bunyan Assistant Director Assessment & Strategy Division tel: 252 8306
Hilal Barwany Service Manager Children's Fund tel: 225 4723



Leicester
City Council

**WARDS AFFECTED
ALL WARDS (CORPORATE ISSUE)**

**SOCIAL SERVICES AND PERSONAL HEALTH SCRUTINY COMMITTEE
CABINET**

**11 JULY 2001
16 JULY 2001**

THE CHILDREN'S FUND

SUPPORTING INFORMATION

1. Report

Introduction

- 1.1 This report sets out the background to the Fund, moving on to cover the interim submission of the 10th May 2001, and the response of the Children and Young People's Unit. The final section of the report will briefly set out the priority areas, other areas of progress made since the interim submission and will give a clear indication of the expected shape of the programme at the time of submission (29th June 2001).
- 1.2 The Children's Fund is a major government initiative aimed at reducing child poverty and social exclusion, and comprises some £450 million over the three financial years beginning April 2001. £380 million of this fund is targeted at providing preventive services for vulnerable 5 – 13 years olds. The other £70 million is the 'Local Network' element of the fund which will be administered by the Community Foundation Network and will make small grants at a local level to voluntary and community groups.
- 1.3 Leicester was fortunate to be one of the forty first wave local authority areas to be chosen, largely because the Children and Young People's Unit are phasing the implementation of the Fund across the country by investing in those areas most in need first. Leicester has been invited to apply for a maximum of £4.8 million from the Children's Fund, and this presents a very positive opportunity for the network of local stakeholders to develop a network of additional preventive services for vulnerable children, young people and their families.
- 1.4 Ensuring that the children and young people in Leicester are supported in achieving their maximum potential is a key strategic aim of the partnership of agencies which offers services to them. Increasingly there has been emphasis on providing services which offer support where needed at an early stage, so preventing the escalation of small problems into major difficulties. The 5 – 13 year age range of the Children's Fund is a crucial one for

children's development, and the opportunity to provide additional preventive input at this stage in their development is welcomed by the partnership.

The Interim submission

- 1.5 The attached Interim 'Assessment Form' and accompanying papers were those sent to the Children and Young People's Unit on the 10th of May, to provide the unit with a description of the progress that had been made in Leicester up to that point.
- 1.6 The papers show that Leicester Children's Planning Partnership has adopted a particular structure for the programme, i.e. that there should be some services which are provided on a city-wide basis, and some which should be provided on a neighbourhood basis. The form shows some initial citywide proposals and a suggested draft funding profile for the programme.
- 1.7 The attached papers relating to the interim submission of the 10th May 2001 are as follows:
 - ◆ The Interim Assessment Form (Appendix 1)
 - ◆ A diagram showing the programme structure (Appendix 2)
 - ◆ A diagram representing the consultation strategy (Appendix 3)
- 1.8 The Children and Young People's Unit feedback on the submission raised the following issues:
 - ◆ Clearer information required on how local voluntary, community and faith groups (including ethnic minority groups) would be represented in the partnership structures.
 - ◆ Fuller information on the data used to choose the areas as well as the rationale for the choice of the three themes identified
 - ◆ More on the linking of the themes and areas
 - ◆ Clarity about the links between the mapping work undertaken and the range of services being proposed
 - ◆ Clarity about services not being used to replace inadequately funded mainstream services
 - ◆ More emphasis on voluntary sector provision and less on social work type provision
 - ◆ More evidence of coherent preventive strategy and preventive web of services
 - ◆ Proposals for community capacity building and involvement of local people
 - ◆ More detail about children and young people's participation.
- 1.9 Many of these issues would have been addressed had the Children and Young People's Unit been clearer about the information they required at the interim stage, because the information was available but not deemed to be required. The imbalance of social work type provision against voluntary and community sector provision was an artefact of the developmental process, in that the process for securing service proposals from the voluntary and community sectors was implemented early at the beginning of June.
- 1.10 We are currently receiving proposals from the voluntary and community sectors, as well as the statutory sector, and will put together a programme which pulls together the best elements of proposals sent to us. The Children's Fund guidance emphasises the

importance of the voluntary and community sectors in planning and delivering services. Leicester Children's Planning Partnership took the view at an early stage that the whole programme should be hosted by a voluntary agency, and a selection process will have been completed in time to name the chosen agency in the final submission. In addition to this, this emphasis on the importance of the voluntary and community sector will be enacted through the commitment of significant funds to providers in these sectors.

Developments since the interim submission

- 1.11 Also attached is the map of the priority areas (Appendix 4).
- 1.12 The programme has been developed to be 'joined up' with the existing strategic developments across the city. The priority areas have been chosen in consultation with partners to coincide with existing Sure Start, Single Regeneration Budget, New Deal, Health Action Zone and Neighbourhood Nursery Initiative areas. There is recognition that there is a need to be flexible because a significant proportion of the services and referrals for services will be school based and school catchments areas overlap the priority areas shown. The areas are shown in the map attached.
- 1.13 Since the submission of the interim report further work has been done on priorities and these are shown below:

1.14 Priorities:

City Wide	<ul style="list-style-type: none"> Level Three Prevention Team Dual Heritage Family Support Disabled Children's Centre Services for Asylum Seekers, Refugees and Non-Habitual Residents Libraries Service – Services for Homeless Families especially at the point of resettlement
Key Areas	<ul style="list-style-type: none"> Beaumont Leys SRB5 New Parks Ward and Estate Braunstone New Deal & SRB4 Saffron and Eyres Monsell Wards Belgrave SRB4 Area St Matthews Sure Start and Highfields SRB2 (east of St Matthews) Greater Humberstone SRB6
Local Projects	<p><i>(In some or all of above areas)</i></p> <ul style="list-style-type: none"> Child Behaviour Intervention Initiative (CBII) Play schemes Education Action Zone (EAZ) Braunstone New Parks Saffron/Monsell School Exclusion and Pre-exclusion projects Service for families for Parents with Mental Health Problems Care Free (support for young carers) Support for families for Parents with Problems of Substance Misuse Voluntary work opportunities for vulnerable children and young people Services for families experiencing domestic violence Family Group Meetings Services for parents of children/young people with moderate learning difficulties Anti-social behaviour and mediation services Emotional literacy/emotional intelligence/resilience building with Vulnerable young people Positive health/exercise/sports provision for vulnerable children

- 1.15 The Children's Fund emphasises the importance of raising educational standards and reducing truancy and exclusion. Much joint work has been undertaken to ensure that the new services are fully compatible with the existing plans of the Education Department.
- 1.16 The importance of child development through play is recognised by the investment in summer play schemes and after-school activities, and this approach addresses the emphasis children and young people put on leisure activities during consultation activities.
- 1.17 The ethnic makeup of the city and the Children's Fund's commitment to inclusion for ethnic minorities led to a specific conference for local Ethnic Minority voluntary, community and faith groups, on the 26th April 2001, at which the Leader of the Council was a speaker. The groups present provided significant feedback and some ideas have been integrated into the programme. Needless to say, it is intended that the programme demonstrates Leicester's commitment to the full inclusion of the ethnic minority communities, and the conference will be repeated in the autumn.
- 1.18 Also important are the needs of children and young people with disabilities, and their families, and this will also be evidenced in the final programme by significant investment.
- 1.19 The core management section of the structure shows that there is a commitment to participation by young people, parents and families and communities, and that fundraising to both expand and sustain the programme is an important element. A stream of money has set aside to allow the results of participation to lead to service developments later in the programme.
- 1.20 In the draft proposals submitted on the 10th May, the nominal amounts established for each of the areas were based on they're being a minimal number of citywide projects. This balance is currently shifting and the result will be a reduction in the amount of money available to each of the priority areas. They will however be recipients of the services provided on a city wide basis, and in some cases the city wide services are targeted at the priority areas and the schools that serve them
- 1.21 An additional factor to take into account is the need to reflect both the different numbers of children in the areas and the differing levels of need and funding available to the individual areas. As a result of this some areas may receive levels of funding which appear higher than other areas, but this will need to be put into the context of the comments above.
- 1.22 The development of preventive services for vulnerable children across the city is being undertaken within the context of the draft Leicester Children's Planning Partnership Joint Family Support Strategy. This is the context within which Social Services is undertaking its review of Children and Family support services and these two processes are being carefully co-ordinated.

2. Financial Implications

- 2.1 As mentioned in the covering report, it is not anticipated that there will be significant consequences for the Council at this stage. However, there will be some significant

decisions to be made about which projects should be supported (if any) by the Council during the tapering period (April 2004 to March 2007).

- 2.2 The programme seeks to ensure sustainability by placing the programme leadership and the majority of services in the voluntary and community sectors, with a fundraising officer to be in post as soon as possible. This post will seek initially to broaden the programme but during the 2nd and 3rd years will seek to secure funding to pick up the taper. There are many more funding sources available to voluntary and community-based projects than to statutory agencies, and it is envisaged that a significant proportion of projects will be sustained through this approach.
- 2.3 Another tranche of projects will simply not require additional funding because they will have achieved their aims during the 3 years of funding agreed initially. Others will have failed to demonstrate their effectiveness or experienced other problems that would lead to the legitimate withdrawal of their funding.
- 2.4 A third tranche of projects will have not secured ongoing funding through the efforts of the fundraising officer, and the council and partner agencies will need to consider whether the evaluations demonstrate sufficient effectiveness and value for money to justify consideration of main programme funding.
- 2.5 The final tranche of projects will be those where the service has been provided by a statutory agency, and these will be largely ineligible for future voluntary sector type funding. Statutory agencies across the relevant partnerships will have to consider these implications at an early stage. The programme is being designed to minimise projects in this category to ensure maximum sustainability across the whole programme.

3. Legal Implications

The legal implications are dealt with in paragraph 4.2 of the covering report.

4. Consultations

- 4.1 There has been a great deal of consultation activity and the list below identifies the groups and agencies that have been consulted so far. This is an ongoing process and will continue through the officer post identified above.

Agency	Type
Parents council	Working group membership / mailing list
Voluntary Action Leicester	Working group membership / mailing list & briefing meeting
Leicestershire Health Authority	Working group membership / mailing list
Environment & Development dept	Working group membership / mailing list
Education dept	Working group membership / mailing list
Early Years Development and Childcare Partnership	Working group membership / mailing list
Leicester Council for Voluntary Youth Services	Working group membership / mailing list
Housing Dept	Working group membership / mailing list
Secondary Headteachers Association	Working group membership / mailing list
Primary Headteachers Association	Working group membership / mailing list

Leicestershire Police	Working group membership / mailing list
Social Services dept	Working group membership / mailing list
City East PCG	Working group membership / mailing list
City West PCT	Working group membership / mailing list
Black Voluntary, Community and Faith organisations	Conference 26 th April 2001
Riverside Community College	Leicester Children's Planning Partnership participation group of Young people (meeting with young people)
Braunstone SRB4 area	Meeting
Bangladeshi Youth and Cultural Shomati	Leicester Children's Planning Partnership participation group of Young people (meeting)
Connexions	Meeting
St Mathews Youth Forum	Meeting
Beaumont Leys SRB5	Meeting
European funding Officer	Meeting
West Humberstone SRB6	Meeting
Looked After Young people	Meeting and consultation event
ADHAR	Meeting
Children's Fund Local Network	Meeting
Red Cross Parents and Young People	Leicester Children's Planning Partnership participation group of Young people (meeting with young people)
African Caribbean Citizens forum	Meeting
Carefree Young Carers	Leicester Children's Planning Partnership participation group of Young people (meeting with young people and parents)
Excellence in Cities	Meeting
Highfields Youth & Community Centre	Meeting
Highfields Library	Meeting
Education Welfare Service	Meeting
St Matthews Sure Start	Meeting
Beaumont Leys Sure Start	Meeting
SureStart Plus	Meeting
Youth Offending Team	Meeting
Neighbourhood Renewal fund	Meeting / correspondence
Children's fund Working Group	Multi-agency meetings on at least fortnightly basis since March 2001
Children's Fund wide group meetings	These meetings are consultation meetings for all members of Leicester Children's Planning Partnership, plus additional membership as appropriate.
Saffron young peoples project	Meeting

4.2 The accompanying paperwork includes a consultation strategy diagram showing the broad groups targeted for consultation, which would build on the work done during this phase of development.

5. Other Implications

OTHER IMPLICATIONS	YES/NO	Paragraph References Within Supporting information
--------------------	--------	--

Equal Opportunities	Yes	The provision of services to excluded groups (i.e. black and ethnic minority children and families and disabled children) is a key element of the fund)
Policy	Yes	These services will impact on the Social Services department's review of children's services
Sustainable and Environmental	Yes	Sustaining the population and reducing social exclusion is central the Children's Fund.
Crime and Disorder	Yes	Some of the services will be targeted at preventing offending amongst the 5 – 13yr population
Human Rights Act	Yes	These services will support the rights of the individual to make choices about their life and to remain with their family and community

6. Report Author

Andrew Bunyan Assistant Director Assessment & Strategy Division tel: 252 8306
Hilal Barwany Service Manager Children's Fund Unit tel: 225 4723

CHILDREN'S FUND – ASSESSMENT FORM

Area	LEICESTER	Region	EAST MIDLANDS
Partnership	LEICESTER CHILDREN'S PLANNING PARTNERSHIP	Accountable Body	STILL TO BE DETERMINED (Interim Accountable Body is Leicester City Council)
Lead Partner	SOCIAL SERVICES	Contact details included	ANDREW BUNYAN
Number of children Between 5 - 13 yrs (if given)	37,566	Total population in area	270,493 (1991 Census) 293,000 approx (East Midland Development Agency)
On Track area	No	Assessor	RUSSELL COUGHTREY

Annual Grant:

	2001/02 Y1	2002/03 Y2	2003/04 Y3	Totals
	358,620	1,934,310	2,333,030	4,625,960

1. Partnership Details

What partnership arrangements are proposed and are they acceptable?

- *The partnership should be based on an existing partnership, and expanded to include key stakeholders.*
- *Voluntary, community and faith groups as well as local minority ethnic groups should be fully represented, if they are not, there should be ongoing plans for involving them.*
- *Children, young people and the local community should be fully involved in the partnership, if they are not there should be ongoing plans for their involvement.*
- *The partnership should link to existing planning arrangements and intended strategic partnerships particularly Local Strategic partnerships*

The Leicester Children's Planning Partnership (LCPP) was selected in January and since then has been expanding its membership to include key stakeholders. As a partnership for both Children's Services Planning and the Health Action Zone (with respect to children and young peoples issues), LCPP has representation from the following agencies:

Social Services

Leicestershire Health Authority

Leicestershire and Rutland NHS trust

Health Action Zone

Education

Housing

Leicestershire Police

Voluntary Action Leicester

Four additional voluntary organisations attend each meeting from a selection of forty

five

The Parents Council

The Leicester Early Years Development and Childcare Partnership

The Area Child Protection Committee

The Drug Action Team

The Youth Offending Team

The Sure Start Programmes

Tackling Teenage Pregnancy programme

Strong links have been made with the Environment and Development department, the various Single Regeneration Budget programmes, and the Neighbourhood Renewal Fund programme in the city

A Leicester Children's Planning Partnership young people's participation pilot project has been underway since January 2001 (with £8000 funding from HAZ) working with the seven groups of young people which follow:

- RIVERSIDE COMMUNITY COLLEGE
- CARE FREE YOUNG CARERS
- BANGLADESHI YOUTH AND COMMUNITY SHOMATI
- SAFFRON YOUTH FORUM
- RUSHEY MEAD COLLEGE
- RED CROSS SPECIAL NEEDS FAMILY SUPPORT CENTRE
- LOOKED AFTER YOUNG PEOPLE

This is being expanded by children's fund development grant funding to include 3 additional groups (young offenders, substance misusers & African Caribbean young people), and all of the groups are being invited to engage in the initial and ongoing development of the Children's Fund. This will include representation at the relevant working and steering groups when this is both fair and practical to implement.

LCPP is well connected with the other major planning partnerships (ACPC, EYDCP, YOT, DAT) and reports to cabinet, scrutiny and the HAZ and health partnership boards. It is envisaged that it will link into the LSP when it comes into effect.

2. Target area(s) and target group(s)

Is there clear evidence of how the target area and/or target group (s) has been identified

- *It should describe how the identification of risk and protective factors and the service gaps was undertaken, and what the main outcomes were.*
- *The proposal should describe the target area(s)/group(s) and their strengths and weaknesses.*
- *It should focus on those 5-13 year old children, young people and families and neighbourhoods most at risk of social exclusion*
- *The baseline data provided should support the choice of area/groups*
- *There should be a breakdown of the target children by age, gender and ethnicity*
- *It should be clear what other initiatives are in the area.*

LCPP has been engaged in strategic local planning based on the assessment of need since its inception some 18 months ago. The strategic plans take account of needs both at a citywide level and at a neighbourhood level. The partnership has been centrally involved in the development of the three SureStart areas, the Surestart plus initiative, Tackling Teenage Pregnancy, the citywide approach to SureStart, the development of the whole Child & Adolescent Mental Health Services strategy (which has recently been awarded Beacon Status), etc. The high level of unmet need amongst disabled children saw the development of the HAZ project for the coordination of services for disabled children, and the service manager has now been in post for two months.

The development of the Children's Fund in Leicester has provided the opportunity to address needs that the partnership has identified, and to begin a strategic process that has been a regular theme of discussion within the partnership. Although the HAZ disabled children's project has only been underway a matter of months, it was based on some considerable research, which has highlighted the unmet need in the Asian population of Leicester. The favoured response to this need is to develop a specialised centre readily accessible to the Asian communities, and revenue costs for this project are included in the citywide leg of the Children's Fund programme.

In addition to this it is also known that Dual Heritage children and young people are over-represented amongst the looked after children population and on the child protection register, not to mention amongst the youth offending population. There have been several attempts to begin to both explore and meet their needs but none with more than short term funding. The inclusion of a small developmental project as a citywide project begins to address this need.

The third area of need to be included in the citywide programme concerns those who are on the cusp of becoming accommodated. Looked after children have very poor life outcomes with respect to education, employment, crime, mental health, homelessness, etc., and the local looked after population has been increasing at a greater rate than the national average (In April 1997 (Local Government Reorganisation) there were about 330 looked after children but this had increased to 536 by February 2001. There is no current preventive service operating in this area. The introduction of a 7day per week service for families where the problems are complex and longstanding, and where there is a clear risk of accommodation, is seen as necessary. This new service will be based in the voluntary sector and will offer very practical assistance to families experiencing this type of difficulty, from getting children and young people ready and off to school in the mornings, to advice and support with respect to behaviour management.

The strategic theme referred to above is the development towards local definition of needs and services, and ultimately local management of planning and service delivery. The Leicester Children's Fund programme is a step in that direction which has significant potential ramifications for the future.

After considerable discussion and consideration a number of areas have been put forward, largely on the basis of indicators of their ranking in the Index of Deprivation. The areas lay in Wards which feature in the bottom 5 – 10% of Wards in the country. Most of these areas are or include existing or future SureStart, SRB or New Deal areas.

The areas are:

- Beaumont Leys (SRB5 & Surestart)
- New Parks
- Braunstone (New Deal)
- Greater Saffron (Surestart)
- St Matthews (SRB2 & Surestart)
- Highfields (SRB2)
- Belgrave (SRB5)
- Greater Humberstone (SRB6)

The funding breakdown between the citywide and neighbourhood arms of the programme is shown in both diagrammatical and spreadsheet formats, in the accompanying papers.

A local consultant is undertaking a mapping exercise, which will report after the submission of this report but in time for its inclusion in the final submission. Additionally, there is a large amount of data gathered both across the city and for particular neighbourhoods, which demonstrates the level of need. This data will be supplied with the final report as appendix 2.

3. Activities and Services

Is there a coherent and robust prevention strategy?

- *The proposals should show evidence of building on the results of the mapping exercise and consultation*
- *It should outline the gaps in service provision and describe clearly how new services will be developed and/or current services will be re-configured to meet Fund objectives and fill the gaps.*
- *Services should be appropriate for 5-13s or specified bands within the range and should be address Levels 2 and 3 in the levels of Prevention in Part One Guidance.*
- *The proposal should outline the evidence of success for the chosen services or explain why new services or innovative ways of working might be successful*
- *There should be substantial involvement of the voluntary sector, including community and faith group, in the leadership of services or new ways of working*
- *Services /new ways of working should be accessible to black and minority ethnic users*
- *In 'predominantly white areas' services/ways of working should ensure awareness/celebration of diversity*
- *Services should work together to form a web of support so that children and young people can move between services and receive the range of support they need.*

The prevention strategy for Leicester is inherent in the emerging Leicester Joint Family Support Strategy (as evidenced by Leicester Children's Planning Partnership's commitment to developing a citywide Surestart approach and which is included in the supporting paperwork). This strategy is set for finalisation through the Health Partnership Boards, Cabinet and Scrutiny during the summer. As is apparent from the attached strategy, Leicester's approach seeks to set citywide standards for all aspects of children's development, and seeks to ensure that children and young people get a 'SureStart', progress in the right direction, and make the right 'connexions' to achieve their future hopes and dreams. The approach targets both communities of need and geographic areas of need for additional investment, over and above the norm provided by universal services. There is a commitment to developing services which work together in a seamless and holistic way, and which address the needs of Leicester's Black and Minority Ethnic Communities.

Leicester's Children's Fund programme is divided into two sub-programmes: a set of citywide projects and a set of neighbourhood focused services.

CITYWIDE PROJECTS:

Disabled Children's Centre:

This will be a multi-agency centre offering a citywide service. Ideally the location will make it particularly accessible to the Asian community, as there are a number of disabled children in this community who do not receive adequate support services. This centre will complement and work closely with the other specialist centre on the southern periphery of the city, the Red Cross Special Needs Family Support Centre in Oadby.

Accommodation Prevention Team:

The numbers of children becoming looked after in Leicester city has risen substantially over the past three years, and there are now 536 children looked after. The consequences of accommodation are well known and it is imperative to prevent accommodation wherever possible by providing families with appropriate support. This group of children fall clearly into level three prevention, i.e. they are children with 'multiple, complex and longstanding difficulties', and they are often also excluded from school, involved in offending, and are on the brink of being excluded from their families.

Dual Heritage Family Support:

This project will build on the work, which has been undertaken locally by the Family Service Unit with parents and dual heritage children. Dual heritage children are over-represented in the looked-after children population, on the child protection register, and amongst young offenders, and as such are a particularly vulnerable group. This project would seek to identify vulnerable dual heritage young people and their families through publicity and outreach, and offer them support to work through the complex issues that may present themselves.

NEIGHBOURHOOD PROJECTS:

These projects are indicative rather than final as the detail of the neighbourhood programmes will be jointly defined through a partnership between LCPP and the various

neighbourhood fora.

Child Behaviour Intervention Initiatives:

Leicester has achieved beacon status for its CAMHS programme, and a key element of the tier two/three services are the three Child Behaviour Intervention Initiatives (CBII). They form the city element of a health district wide approach to preventive mental health services for 0 – 10year olds. The CBII's are currently under review and the three existing CBII's are being reshaped and it is proposed that the Children's Fund support the extension of the CBII program to cover new neighbourhoods. Although this stream of funding is being channelled to neighbourhoods through the partnership between LCPP and the local fora, it is anticipated that there will be broad agreement across the city to support the extension and refocusing of the CBII program. The programme will be refocused to impact upon prevention levels 2 and 3, and the city wide approach being developed involves a matrix management approach to the multi-agency staff group (i.e. they are managed on casework issues by service based specialist supervisors, whilst the strategic and overall functioning of the project will be the responsibility of a citywide co-ordinator. The co-ordinator will enhance the 'joined-up-ness' of the agencies involved and the teamwork across the 5 – 6 teams, which will be developed in the future.

Play schemes:

A considerable number of play schemes are funded every year across the city, but there are some limitations to the funding provided, particularly with respect to the length of funding, i.e., some play schemes are only funded for 3 of the 6 weeks holiday during the summer, and not at all during other holiday periods. Given the links between children and young people having nothing constructive to do and offending, it is envisaged that the neighbourhoods may want to enhance their playscheme provision.

In several of the 8 areas chosen there are existing or planned SureStarts, and it is anticipated that the Children's Fund will be used to fund extensions of the SureStart programme. An example of this is the 'Bookstart' programme which seeks to encourage parents to read to their children by providing age appropriate books. Other areas are recipients of regeneration funding including Single Regeneration Budget or New Deal funding, and these areas have projects, which could be usefully extended with Children's fund resources. An example of this is the primary school exclusion program in the Beaumont Leys SRB5 area, and the children's fund could extend this up to the age of 14.

School Exclusion:

The St Matthews School Exclusion project:

This project has been underway with SRB2 funding for 5 years with positive outcomes with respect to the involvement of marginalized and excluded young people on the estate. The funding expires at the end of March 2002, and the continuation of the programme is fully support by the local Community Association and the Youth Forum (which is a subgroup of the forum), which deals with all issues relating to children and young people.

The Highfields Compact:

This is a project that has been in existence since 1997 (SRB2 funded – due for expiry

March 2002) that has been operating an outreach service for ethnic minority young people from 5 to 25 who are absent from school and involved in offending. The programme has been operational in a small area in the heart of the Highfields area, and there are good arguments to suggest that it will be beneficial to broaden the programme to cover the whole of Highfields. Additionally, the compact have plans to use peer-mentoring approaches to further increase the impact of the work that they are undertaking with young people in the area.

The Beaumont Leys Education project:

A one-year pilot project has been established to reduce exclusions at the primary schools in the Beaumont Leys area by working closely with schools to identify children at risk of exclusion and work with them and their parents to reduce this risk.

The detail of the services to be provided at neighbourhood level will be determined through discussions with the local fora (e.g. neighbourhood fora, Community associations, etc). These discussions have already begun and will continue during May and June with the intention of finalising the detail by the end of June. It will not be possible to be clear about the service provider when a new service is being developed. However, for those service providers who are being re-funded, or whose services are being extended it will be possible to be specific about the service providers.

In addition to the review of the CBII service there is also a review of the Social Services Department's family support services, and these reviews will be taking into account the development of the Children's Fund programme, so that a carefully woven tapestry of services is constructed to meet the needs of the children, young people and families of Leicester.

4. Identification and referral mechanisms

Is there a thought through systems for the identification, referral and assessment at risk of social exclusion?

- *It should be clear how children and young people at risk of social exclusion are currently identified*
 - *The proposal should outline how children and young people will be identified and introduced to appropriate services, and how they will be to refer themselves to services*
 - *The system of identification/referral should identify both individual children and groups of children*
 - *There should be a system to record the up take of services. If a system is still being developed, there should be timescale for the development*
 - *There should be a clear outline of how information exchange will be managed*

Children at risk of social exclusion are identified by professional and other concerned individuals, who either give them individual advice or refer them on to the agencies that they are aware of that can meet their needs. There are many voluntary and community organisations providing services in the communities, but unless the children may be possible 'children in need' or children with a medical need, they may not come to the attention of the statutory agencies. There is therefore no current system, which catches all children at risk of social exclusion.

We propose to develop an assessment framework related to the Children in Need Assessment Framework (CINAF), but not as complex or detailed. It may be that the Connexions APIR system could be usefully adapted to fulfil this purpose, providing an initial platform of assessment, which would be compatible with the CINAF. Work will soon be underway to develop an appropriate system in time for the commencement of the main elements of the programme in April 2002.

This new assessment process will be communicated to all frontline professionals in Leicester during a programme of training which informs them about the risk of social exclusion, the assessment process, the links to the CINAF, and the services both currently available or planned locally.

This will be accompanied by a planned approach to publicity including press releases, conferences, seminars, and articles in local newsletters (See the fund raising /publicity function in the core management group of the programme).

5. Dialogue with and involvement of children, young people and their families

Is there an effective, ongoing strategy for involving children and young people and their families in the design and delivery of services?

- *The proposal should demonstrate how children and young people have been involved in the design and delivery of the proposal/services and been given the opportunity to influence implementation*
- *A wide range of children and young people been consulted/involved with the partnership*
- *The key messages from the consultation should be included*
- *It should outline how the partnership will build on the consultations and develop continuous dialogue with children and young people*
- *There should be plans for training young people and local residents to make an effective contribution to the Fund in their area*

There has been contact to date with five of the ten groups of children and young people with specific regard to the Children's Fund and this process is ongoing through the Leicester Children's Planning Partnership pilot participation program mentioned above. By the time that the final submission is made a total of 10 groups of young people will have been engaged in a dialogue about the Children's Fund.

A number of key messages are emerging from young people, and some groups are keen on increasing their access to leisure facilities, and health facilities without parental awareness. Young carers would like support to set up a website. One of the most important messages is that young people need to develop a relationship with the person facilitating the participation, and to that end, a participation officer has been built into the core structure of the Leicester programme.

The engagement of stakeholders at a neighbourhood level will emerge out of discussions with the neighbourhood fora, as the fora chosen will be representative in nature.

6. Objectives, targets and milestones

Are there measurable and achievable targets and milestones consistent with existing Public Service Agreement targets where appropriate (see attached sheet)

The mapping of the Children's Fund objectives against the PSA targets has not yet taken place but will be complete by the time of the final submission.

7. Structure and management of the programme

What management structures are proposed and are they acceptable

- *The proposal should outline how the programme will be structured in terms of management, organisation, co-ordination, staffing*
- *A lead agency should be identified and there should be substantial involvement of the voluntary sector*
- *There should be evidence of collective responsibility for the delivery of the programme*
- *There should be clear lines of accountability*
- *The partnership should be recruiting a programme manager*

NB: We have been encouraging partnerships to look, where possible, to the voluntary sector to lead the development of the Children's Fund in their area. If you have any

concerns about the management of the programme, you will need to talk urgently with the partnership.

The structure of the programme is shown on the attached sheets although at this stage Leicester Children's Planning Partnership has not been able to identify a 'host agency' for the programme.

Leicester Children's Planning Partnership has written to local and national voluntary organisations, as well as a number of other agencies from the statutory sector requesting that they answer a number of specific queries relating to their capacity to deliver the whole program. Over a dozen responses have been received and they are being assessed. When the submissions have been processed it is the intention of Leicester Children's Planning Partnership to enter into detailed discussions with a shortlist of agencies, with a view to determining which of the agencies can offer best value to the citizens of Leicester. It is envisaged that this process will have been completed by the time of the final submission, and that agreement will have been reached in principle with the chosen organisation.

8. Monitoring & Evaluation

Are there proposals for the monitoring and evaluation of the programme?

- *The proposal should set out how the partnership plans to collect and manage monitoring information and for monitoring the programme's performance, including identifying an named agency to undertake the evaluation where appropriate*

NB: *Given that partnerships will not have received the evaluation guidance, this area is likely to require further work over the coming months for most partnerships.*

Leicester Children's Planning Partnership will be building on the progress made by the local Surestart programs on the establishment of multi-agency computer database.

Both the citywide program and the neighbourhood program will be monitored by Commissioning / contract compliance / monitoring and evaluation officer positioned in the program management group. An annual sum of £10,000 has also been set aside to commission external evaluation.

The detail of this area of the programme will be developed further by the time of the final submission as it is closely related to the nature of the projects being funded. The completion of this task is however likely to take some considerable time and will

probably rely on the appointment of the programme management team for completion.

9. Communication

Is there an effective communication strategy?

- *There should be evidence that all key stakeholders have had the opportunity to be involved in the development of the proposal/services*
- *There should be clear plans to ensure that all 5-13 year old children, young people and their families are aware of the Children's Fund services and projects available in their community*

Leicester Children's Planning Partnership is using its young people's participation pilot to engage a number of groups of young people in a dialogue about the development of the fund in the first instance, and about a broader range of health and social care issues in due course.

There has also been a conference to engage the black and ethnic minority communities in the development and future management of the fund. This was undertaken because of the poor representation of the black voluntary sector through the offices of Voluntary Action Leicester. A repeat conference will be organised for September to keep up the momentum with these communities.

The many statutory agencies and local voluntary agencies which are involved in Leicester Children's Planning Partnership and thus have been involved in discussions about the fund.

There has been some positive publicity in the local media about the fund, but there is still along way to go. The next phase of publicity will accompany the development of the proposals at neighbourhood level, as it will be necessary to inform all interested parties about the opportunity to both make suggestions about possible service developments, and to apply to provide specific services.

Many of the neighbourhood based initiatives have well established means of communicating with the local communities, and early discussions have indicated that the Children's Fund programme can use these channels in partnership with the local programmes. These channels of communication will be utilised once the local partnerships have formally agreed to work with Leicester Children's Planning Partnership to plan and deliver local Children's Fund services.

10. Money

Is there a completed money profile?

- *There should be a completed, realistic profile for Year 1, including any capital spend (max 2%) & any other sources of funding that have been identified*
- *The proposal should outline how much is currently being spent on prevention*
- *Letters of commitment to mainstreaming should be included*

The financial profile is attached showing the breakdown between the core costs, the citywide elements, and the neighbourhood elements.

It is anticipated that the Children's Fund projects in those areas which have other sources of funding (e.g. Surestart, SRB or New Deal) will seek some element of matched funding, to maximise the impact of the fund. Early discussions have revealed that there are many areas where joint investment will be possible and mutually beneficial. The preservation of the identity of the Children's Fund projects in joint funding situations is recognised as being essential and initial commitments have been made to ensure that there is sufficient visibility.

9. On Track (if relevant)

Is there a clear outline of how the On Track project will link to the Children's Fund work?

10. Equal Opportunities

Is there an equal opportunity policy both for the people who use the services and the people who staff the services?

- *The policy should mention race, religion, disability, age, gender and sexual orientation.*
- *It should include a commitment to anti-discriminatory practice in any Children's Fund setting and a commitment to tackle prejudice and discriminatory remarks.*

Leicester Children's Planning Partnership is deeply committed to equal opportunities and will be drawing upon its constituent agencies' policies to develop a shared policy for the Children's Fund. One of the criteria for choosing the host agency will be the evidencing of their commitment to equal opportunities and their ability to provide appropriate services to the many and varied communities of Leicester.

11. Protecting Children from Harm

Is there an acceptable child protection policy?

- *All services must follow safe recruitment practices and incorporate staff and volunteer awareness of child safety and protection issues into their training*
- *If there is no policy, when will the policy be developed or adapted*

The Development of the Children's Fund assessment process, and the protocols linking it with the CINAf will be undertaken in full consultation with the ACPC, with whom the Leicester Children's Planning Partnership has very strong links (the Chair of Leicester Children's Planning Partnership is also the vice chair of the ACPC). The development of the assessment protocols and the links to the child protection system will be undertaken after the detail at neighbourhood level is defined (i.e. towards the end of the financial year).

All local services and projects will be brought within the area Child Protection procedures through networking and relevant training.

12. Key feedback points

- *Please include key points (both strengths and weaknesses) to feedback to partnership*

13. Regional feedback – for completion by Regional Co-ordinators

How do you assess local capacity to develop the Children's Fund – (are there any serious financial or resource problems, failing services or other indicators)?

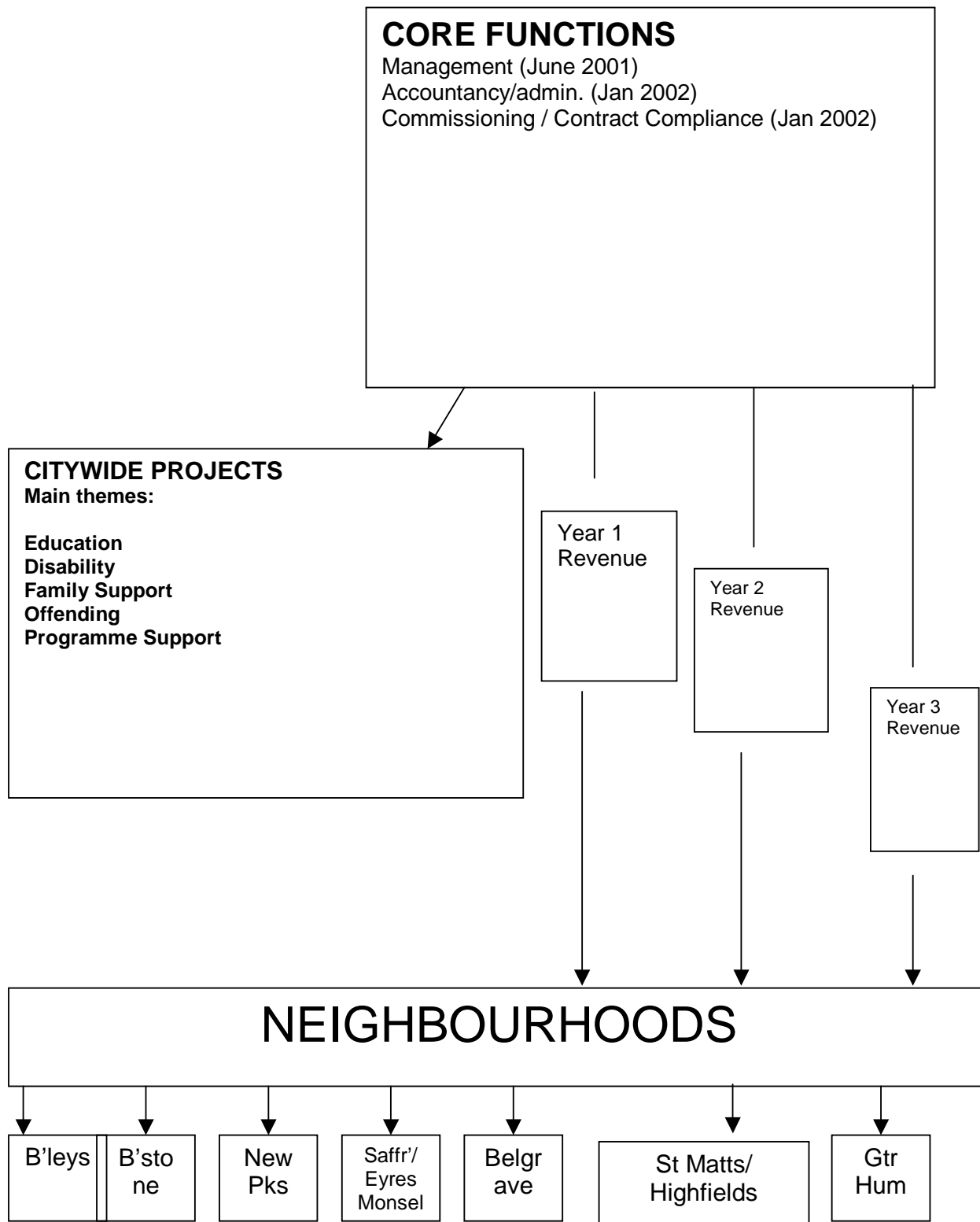
How do you rate the area's track record with other locally based initiatives?

Does the proposal join and link up appropriately with other related initiatives

From your knowledge of the area, do you think that local voluntary and community groups are fully involved? Do you have any concerns about the capacity of the local voluntary sector?

Other comments

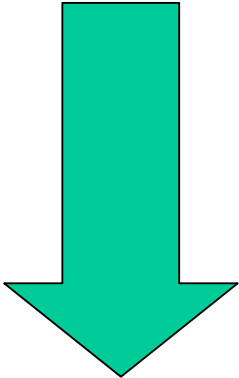
LEICESTER CHILDREN'S FUND PROGRAMME STRUCTURE



LEICESTER CHILDREN'S FUND CONSULTATION STRATEGY

- ## YOUNG PEOPLE'S GROUPS
- RIVERSIDE COMMUNITY COLLEGE
 - CARE FREE YOUNG CARERS
 - BANGLADESHI YOUTH AND COMMUNITY SHOMATI
 - SAFFRON YOUTH FORUM
 - YOUNG OFFENDERS
 - SUBSTANCE MISUSERS
 - AFRICAN CARIBBEAN YOUNG PEOPLE
 - RUSHEY MEAD COLLEGE
 - RED CROSS SPECIAL NEEDS FAMILY SUPPORT CENTRE
 - LOOKED AFTER YOUNG PEOPLE

**CITYWIDE CONSULTATIONS:
RELIGIOUS, ETHNIC AND COMMUNITY
OF INTEREST ORGANISATIONS**



**WORKING
TOWARDS
LOCAL
MANAGEMENT**

NEIGHBOURHOODS

